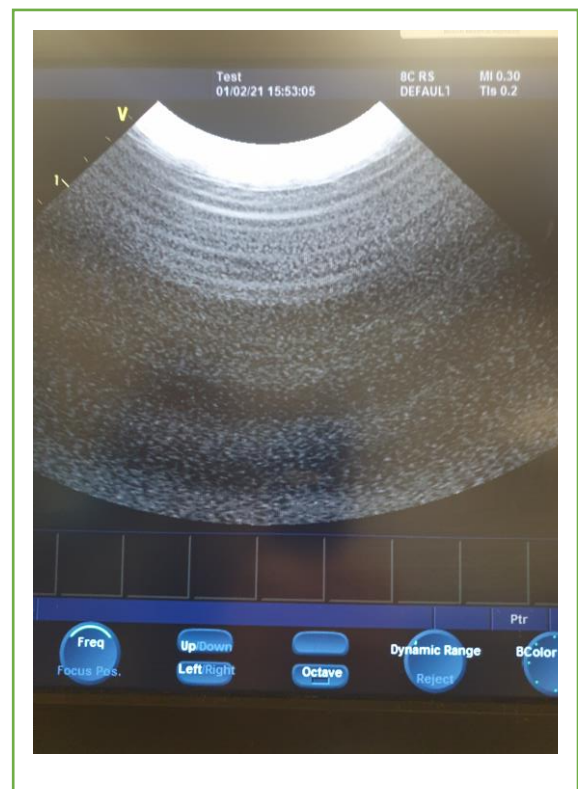
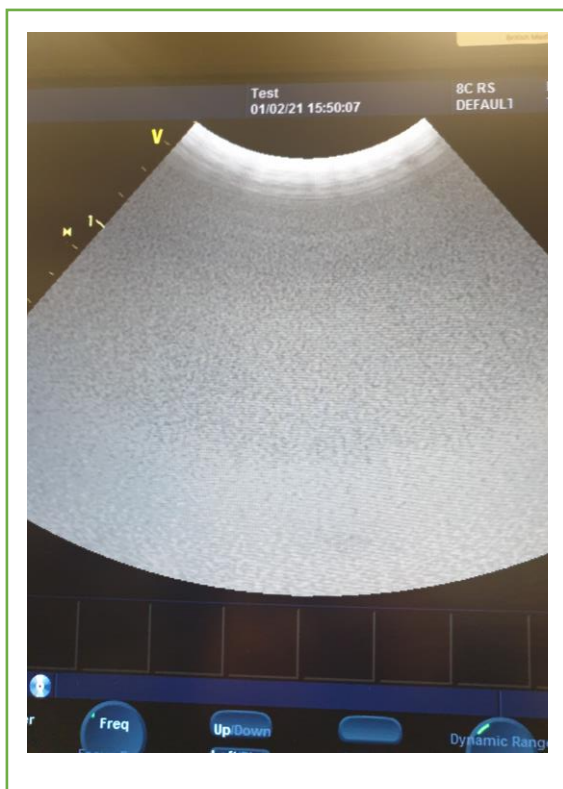


Ultrasound Transducer Condition Report

Date Tested - 01/02/2021	Carried out By - I Rutherford
Manufacturer - GE	Model Number - 8C RS
Serial Number - 230971WX4	
Transducer Type - Micro Convex	
Date of Manufacture - April 2012	
System used to Test - GE Vivid S6	
Cable - Good	
Lens - Good	
Discolouration - Slight	
Overall Condition - Good	

© British Medical Auctions

Airscans -

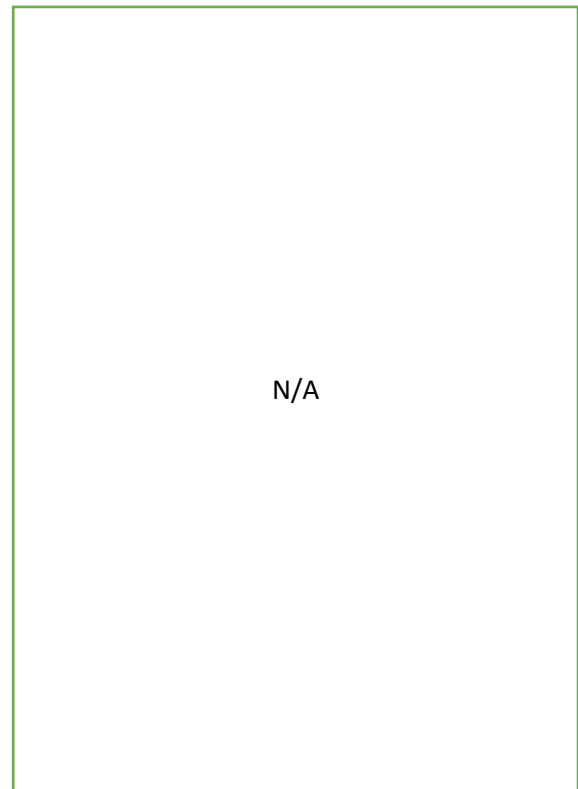
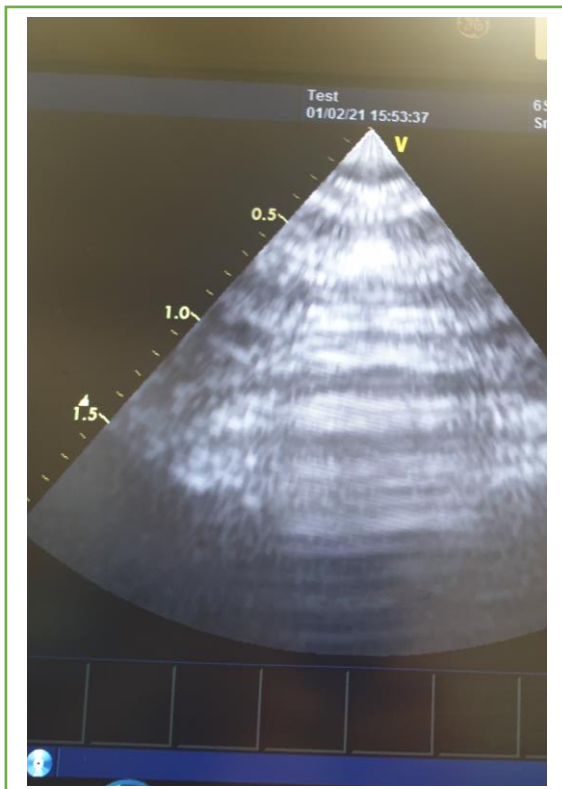


Ultrasound Transducer Condition Report

Date Tested - 01/02/2021	Carried out By - I Rutherford
Manufacturer - GE	Model Number - 6S-RS
Serial Number - 130055PD7	
Transducer Type - Sector Array	
Date of Manufacture - 08-2012	
System used to Test - GE Vivid S6	
Cable - Good	
Lens - Good	
Discolouration - Minimal	
Overall Condition - Good	

© British Medical Auctions

Airscans -



Ultrasound Transducer Condition Report

Date Tested - 01/02/2021	Carried out By - I Rutherford
Manufacturer - GE	Model Number - M4S-RS
Serial Number - 9464YP7	
Transducer Type - Matrix Cardiac Sector	
Date of Manufacture - May 2012	
System used to Test - GE Vivid S6	
Cable - Good	
Lens - Good	
Discolouration - Minimal	
Overall Condition - Good	

© British Medical Auctions

Airscans -

