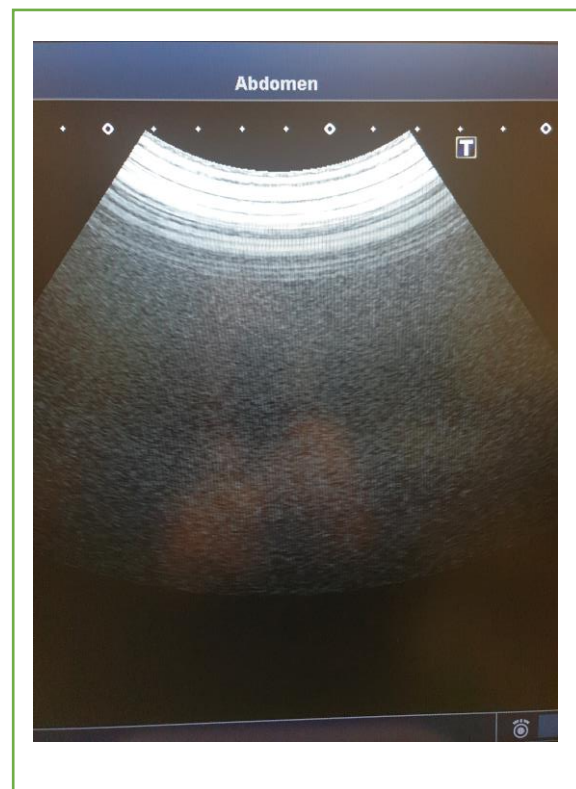
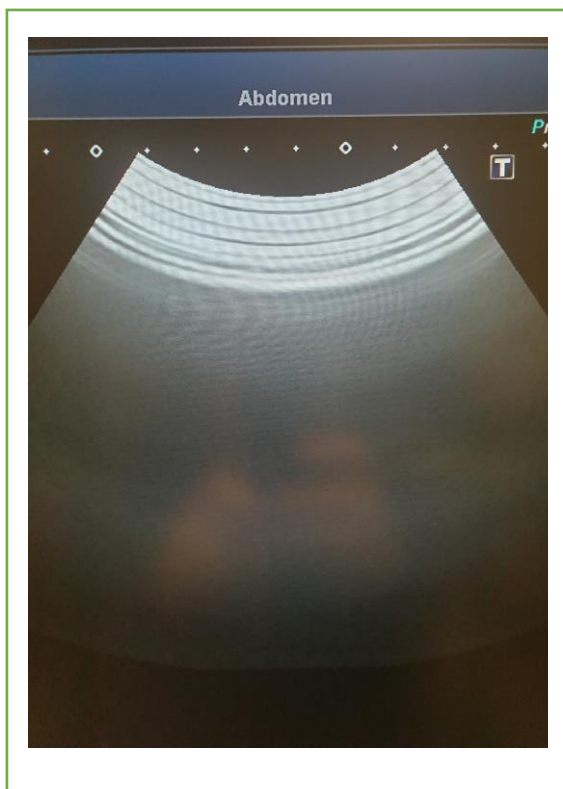


## Ultrasound Transducer Condition Report

<b>Date Tested - 01/02/2021</b>	<b>Carried out By - I Rutherford</b>
<b>Manufacturer - Toshiba</b>	<b>Model Number - PVT-375BT</b>
<b>Serial Number - FDA1162314</b>	
<b>Transducer Type - Convex</b>	
<b>Date of Manufacture - 2011/06</b>	
<b>System used to Test - Toshiba Aplio 500</b>	
<b>Cable - Good</b>	
<b>Lens - Good</b>	
<b>Discolouration - None</b>	
<b>Overall Condition - Good</b>	© British Medical Auctions

### Airscans -

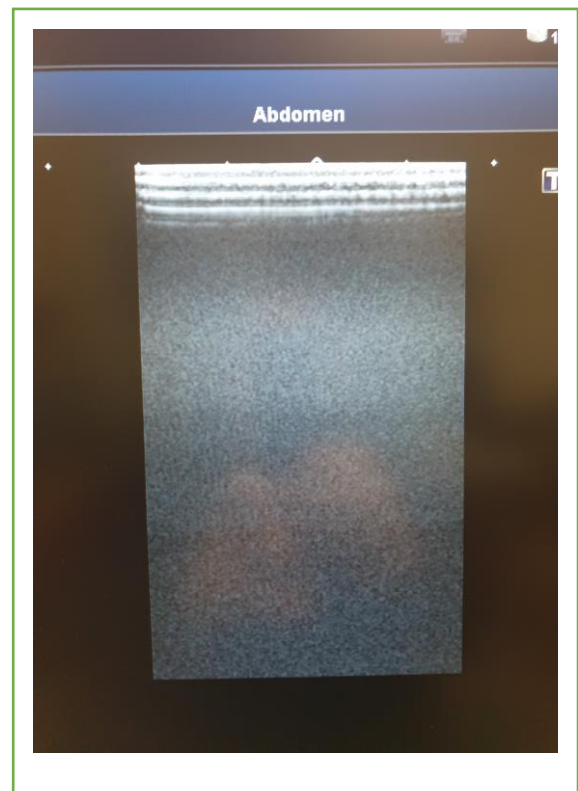
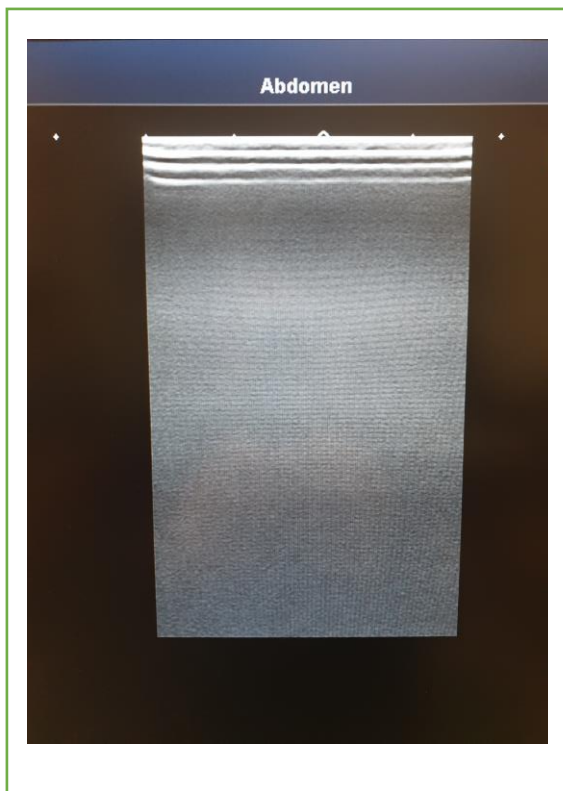


## Ultrasound Transducer Condition Report

<b>Date Tested - 01/02/2021</b>	<b>Carried out By - I Rutherford</b>
<b>Manufacturer - Toshiba</b>	<b>Model Number - PLT-704SBT</b>
<b>Serial Number - MAA1532096</b>	
<b>Transducer Type - Linear</b>	
<b>Date of Manufacture - 2015-03</b>	
<b>System used to Test - Toshiba Aplio 500</b>	
<b>Cable - Good</b>	
<b>Lens - Good</b>	
<b>Discolouration - None</b>	
<b>Overall Condition - Good</b>	

© British Medical Auctions

### Airscans -

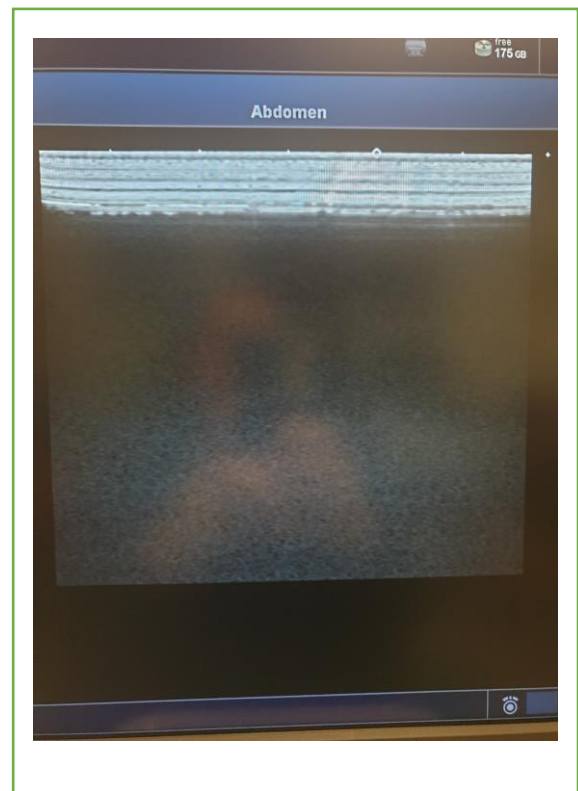
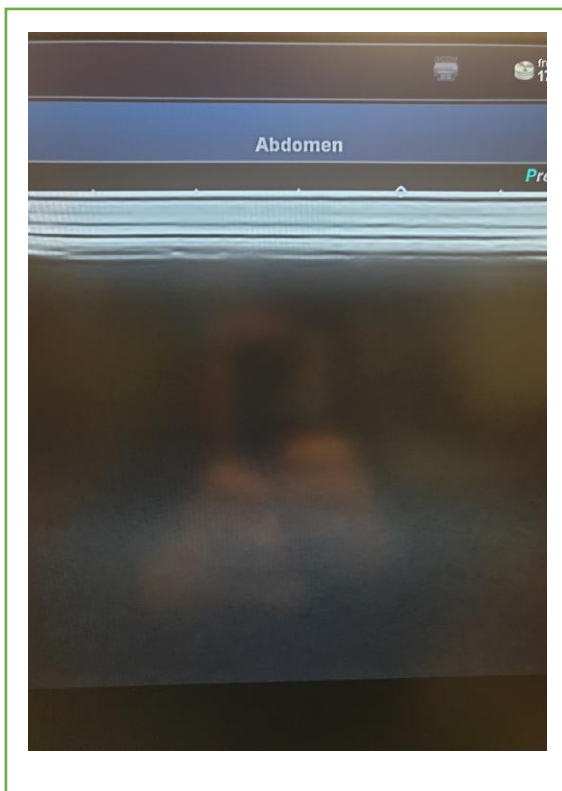


## Ultrasound Transducer Condition Report

<b>Date Tested - 01/02/2021</b>	<b>Carried out By - I Rutherford</b>
<b>Manufacturer - Toshiba</b>	<b>Model Number - PLT-1005BT</b>
<b>Serial Number - FMA1532248</b>	
<b>Transducer Type - Linear</b>	
<b>Date of Manufacture - 2015-03</b>	
<b>System used to Test - Toshiba Aplio 500</b>	
<b>Cable - Good</b>	
<b>Lens - Good</b>	
<b>Discolouration - None</b>	
<b>Overall Condition - Good</b>	

© British Medical Auctions

### Airscans -



## Ultrasound Transducer Condition Report

<b>Date Tested - 01/02/2021</b>	<b>Carried out By - I Rutherford</b>
<b>Manufacturer - Toshiba</b>	<b>Model Number - PVT-781VT</b>
<b>Serial Number - FMA1572174</b>	
<b>Transducer Type - Transvaginal</b>	
<b>Date of Manufacture - 2015-07</b>	
<b>System used to Test - Toshiba Aplio 500</b>	
<b>Cable - Good</b>	
<b>Lens - Good</b>	
<b>Discolouration - None</b>	
<b>Overall Condition - Good</b>	

© British Medical Auctions

### Airscans -

