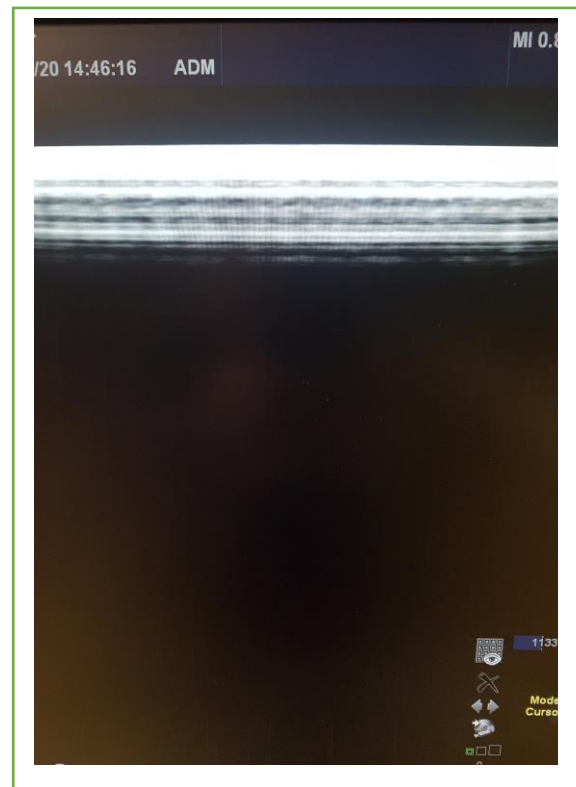
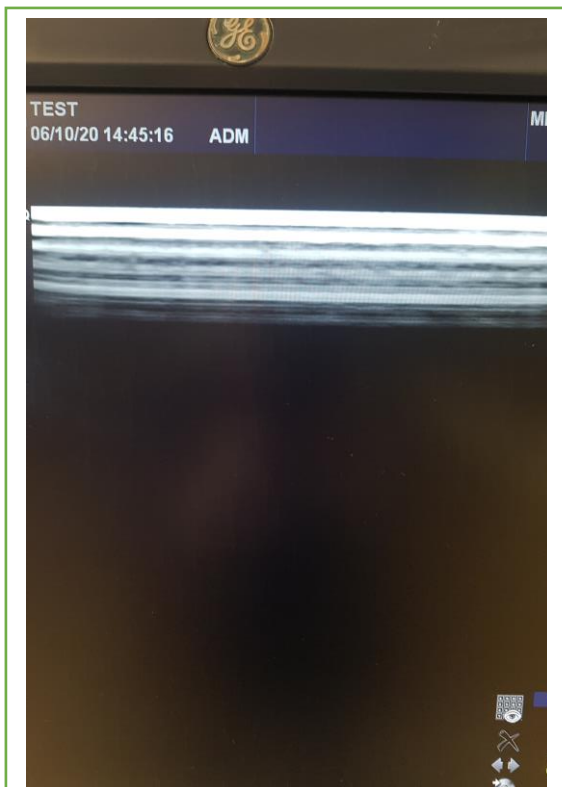


## Ultrasound Transducer Condition Report

<b>Date Tested 6/10/2020</b>	<b>Carried out By – I. Rutherford</b>
<b>Manufacturer – GE</b>	<b>Model Number – 9L-D</b>
<b>Serial Number – 131993WP8</b>	
<b>Transducer Type –Linear</b>	
<b>Date of Manufacture – February 2013</b>	
<b>System used to Test – GE Logiq E9</b>	
<b>Cable – Good</b>	
<b>Lens – Good</b>	
<b>Discolouration –Slight</b>	
<b>Overall Condition – Good</b> © British Medical Auctions	

**Airscans –**

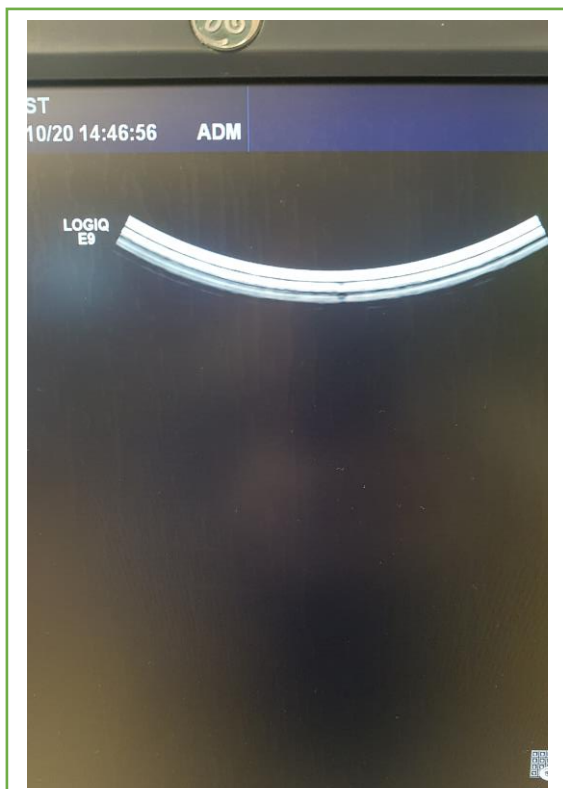


## Ultrasound Transducer Condition Report

<b>Date Tested 6/10/2020</b>	<b>Carried out By – I. Rutherford</b>
<b>Manufacturer – GE</b>	<b>Model Number – M6C</b>
<b>Serial Number – 67582YP7</b>	
<b>Transducer Type – Convex</b>	
<b>Date of Manufacture – January 2011</b>	
<b>System used to Test – GE Logiq E9</b>	
<b>Cable – Good</b>	
<b>Lens – Good</b>	
<b>Discolouration –Slight</b>	
<b>Overall Condition – Good</b>	

© British Medical Auctions

### Airscans –



## Ultrasound Transducer Condition Report

<b>Date Tested 6/10/2020</b>	<b>Carried out By – I. Rutherford</b>
<b>Manufacturer – GE</b>	<b>Model Number – C1-5-D</b>
<b>Serial Number – 191411YP8</b>	
<b>Transducer Type – Convex</b>	
<b>Date of Manufacture – 2015/11</b>	
<b>System used to Test – GE Logiq E9</b>	
<b>Cable – Good</b>	
<b>Lens – Good</b>	
<b>Discolouration –Slight</b>	
<b>Overall Condition – Good</b>	

© British Medical Auctions

### Airscans –

